

## IES Report

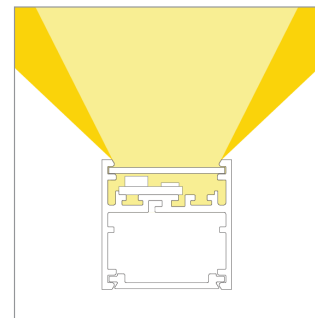
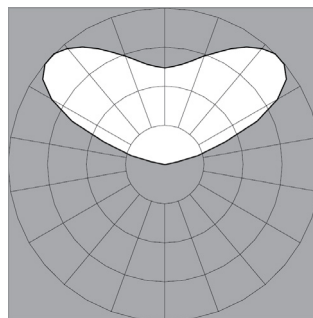
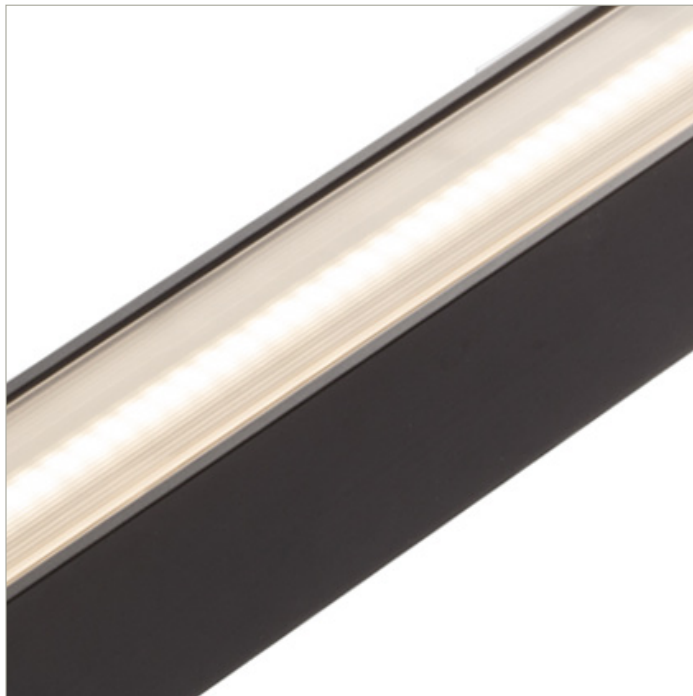
# BoxRail® | 207 | Wide Batwing, up | 80 CRI | LO

207-BX-XX-4-48-XX-XX-XX-XX-X-X-Z-LO-35-G1-X-BL-X

	2700K	3000K	3500K	4000K
Efficacy - Lumens per Watt	93	96	98	98
Total Lumens, 4' rail length (1219mm)	1331	1373	1401	1401
Lumens per foot (305mm)	333	343	350	350
Input Power (W), 4' rail length (1219mm)	14.4	14.4	14.4	14.4
Watts per foot (305mm)	3.6	3.6	3.6	3.6
CRI	82	82	82	82

Due to the large number of options in Vode's product offering, most Vode IES reports are factored reports prepared from source reports. Source reports are the IES test reports prepared for Vode by an NVLAP accredited photometric test laboratory. Factored reports are based on data from the Vode source reports.

If the data above is in black, it is directly from a Vode source report. If it is in grey, it is factored from Vode source reports. Reference details on Vode source reports can be found on the [IES File Finder](#) page on [vode.com](#).



## IES Report

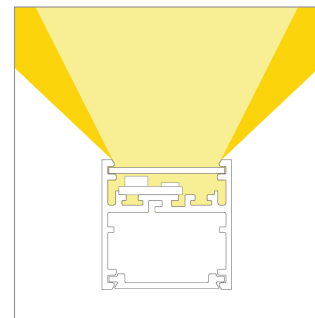
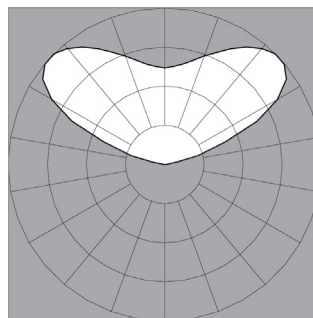
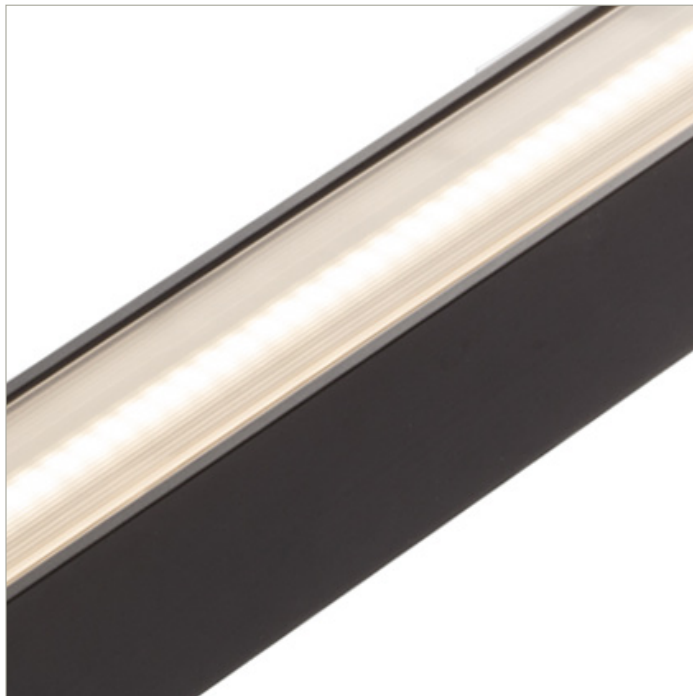
# BoxRail® | 207 | Wide Batwing, up | 80 CRI | SO

207-BX-XX-4-48-XX-XX-XX-X-X-Z-SO-35-G1-X-BL-X

	2700K	3000K	3500K	4000K
Efficacy - Lumens per Watt	106	109	111	111
Total Lumens, 4' rail length (1219mm)	2661	2745	2801	2801
Lumens per foot (305mm)	665	686	700	700
Input Power (W), 4' rail length (1219mm)	25.3	25.3	25.3	25.3
Watts per foot (305mm)	6.4	6.4	6.4	6.4
CRI	82	82	82	82

Due to the large number of options in Vode's product offering, most Vode IES reports are factored reports prepared from source reports. Source reports are the IES test reports prepared for Vode by an NVLAP accredited photometric test laboratory. Factored reports are based on data from the Vode source reports.

If the data above is in black, it is directly from a Vode source report. If it is in grey, it is factored from Vode source reports. Reference details on Vode source reports can be found on the [IES File Finder](#) page on [vode.com](#).



## IES Report

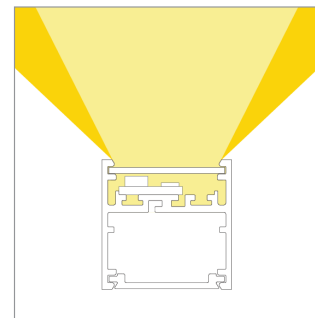
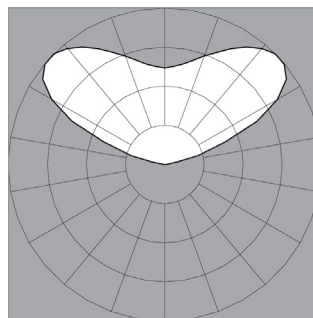
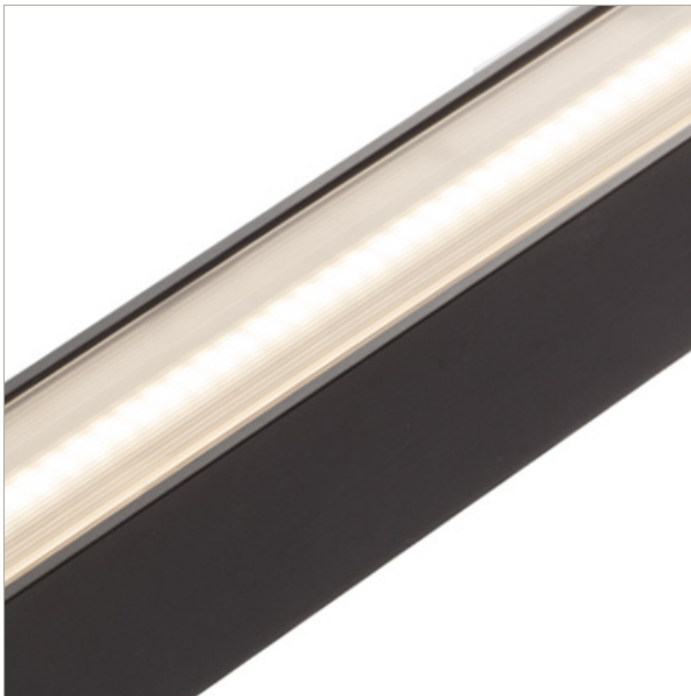
# BoxRail® | 207 | Wide Batwing, up | 80 CRI | HO

207-BX-XX-4-48-XX-XX-XX-X-X-Z-HO-35-G1-X-BL-X

	2700K	3000K	3500K	4000K
Efficacy - Lumens per Watt	99	102	104	104
Total Lumens, 4' rail length (1219mm)	5057	5216	5323	5323
Lumens per foot (305mm)	1264	1304	1331	1331
Input Power (W), 4' rail length (1219mm)	51.6	51.6	51.6	51.6
Watts per foot (305mm)	12.9	12.9	12.9	12.9
CRI	82	82	82	82

Due to the large number of options in Vode's product offering, most Vode IES reports are factored reports prepared from source reports. Source reports are the IES test reports prepared for Vode by an NVLAP accredited photometric test laboratory. Factored reports are based on data from the Vode source reports.

If the data above is in black, it is directly from a Vode source report. If it is in grey, it is factored from Vode source reports. Reference details on Vode source reports can be found on the [IES File Finder](#) page on [vode.com](#).



## IES Report

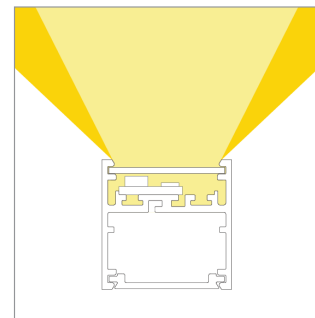
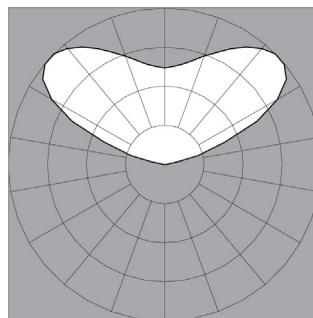
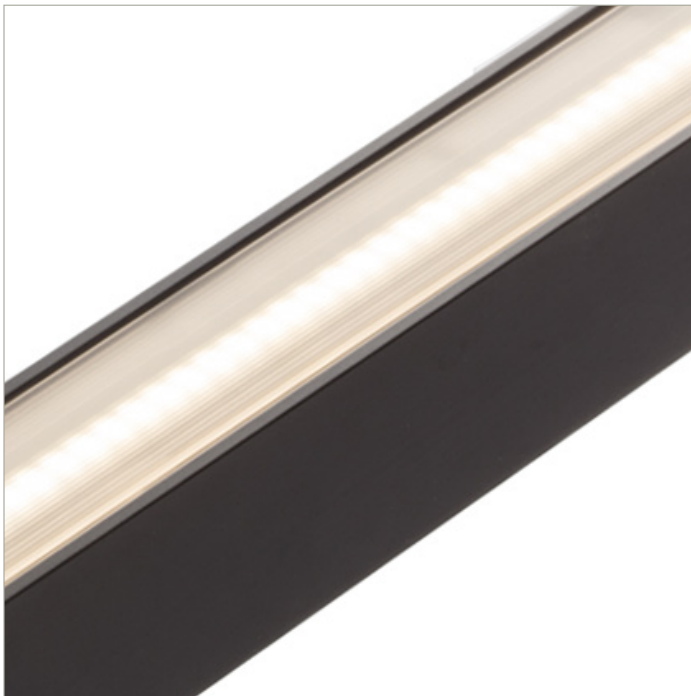
# BoxRail® | 207 | Wide Batwing, up | 90 CRI | LO

207-BX-XX-4-48-XX-XX-XX-X-X-Z-LO-359-G1-X-BL-X

	2700K	3000K	3500K	4000K
Efficacy - Lumens per Watt	80	83	84	85
Total Lumens, 4' rail length (1219mm)	1147	1183	1208	1220
Lumens per foot (305mm)	287	296	302	305
Input Power (W), 4' rail length (1219mm)	14.4	14.4	14.4	14.4
Watts per foot (305mm)	3.6	3.6	3.6	3.6
CRI	94	94	94	94

Due to the large number of options in Vode's product offering, most Vode IES reports are factored reports prepared from source reports. Source reports are the IES test reports prepared for Vode by an NVLAP accredited photometric test laboratory. Factored reports are based on data from the Vode source reports.

If the data above is in black, it is directly from a Vode source report. If it is in grey, it is factored from Vode source reports. Reference details on Vode source reports can be found on the [IES File Finder](#) page on [vode.com](#).



## IES Report

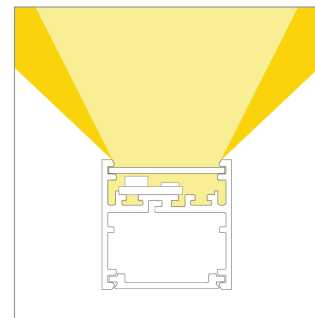
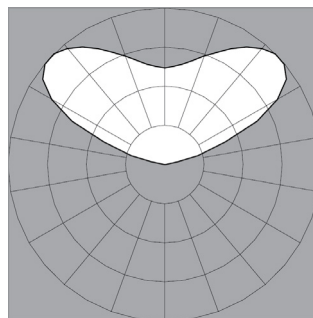
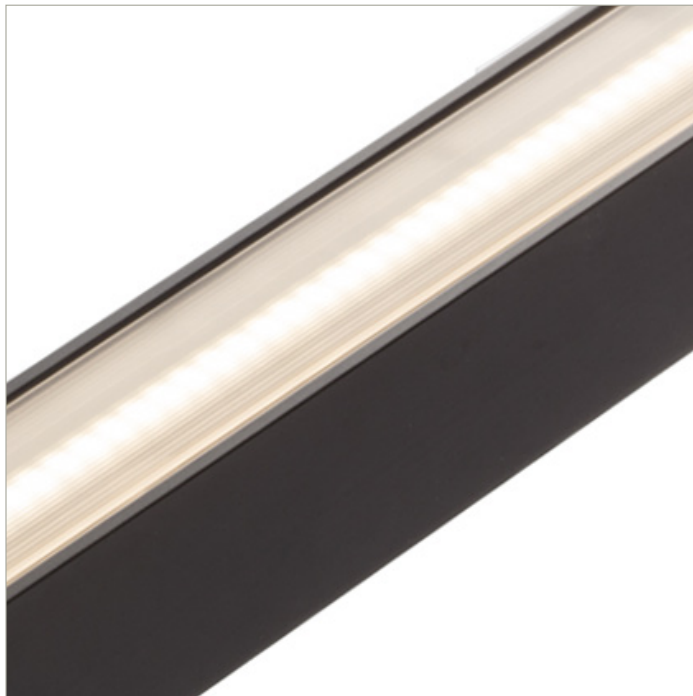
# BoxRail® | 207 | Wide Batwing, up | 90 CRI | SO

207-BX-XX-4-48-XX-XX-XX-X-X-Z-SO-359-G1-X-BL-X

	2700K	3000K	3500K	4000K
Efficacy - Lumens per Watt	91	94	96	97
Total Lumens, 4' rail length (1219mm)	2294	2367	2415	2439
Lumens per foot (305mm)	574	592	604	610
Input Power (W), 4' rail length (1219mm)	25.3	25.3	25.3	25.3
Watts per foot (305mm)	6.4	6.4	6.4	6.4
CRI	94	94	94	94

Due to the large number of options in Vode's product offering, most Vode IES reports are factored reports prepared from source reports. Source reports are the IES test reports prepared for Vode by an NVLAP accredited photometric test laboratory. Factored reports are based on data from the Vode source reports.

If the data above is in black, it is directly from a Vode source report. If it is in grey, it is factored from Vode source reports. Reference details on Vode source reports can be found on the [IES File Finder](#) page on [vode.com](#).



## IES Report

# BoxRail® | 207 | Wide Batwing, up | 90 CRI | HO

207-BX-XX-4-48-XX-XX-XX-X-X-Z-HO-359-G1-X-BL-X

	2700K	3000K	3500K	4000K
Efficacy - Lumens per Watt	85	88	89	90
Total Lumens, 4' rail length (1219mm)	4359	4497	4589	4634
Lumens per foot (305mm)	1090	1124	1147	1159
Input Power (W), 4' rail length (1219mm)	51.6	51.6	51.6	51.6
Watts per foot (305mm)	12.9	12.9	12.9	12.9
CRI	94	94	94	94

Due to the large number of options in Vode's product offering, most Vode IES reports are factored reports prepared from source reports. Source reports are the IES test reports prepared for Vode by an NVLAP accredited photometric test laboratory. Factored reports are based on data from the Vode source reports.

If the data above is in black, it is directly from a Vode source report. If it is in grey, it is factored from Vode source reports. Reference details on Vode source reports can be found on the [IES File Finder](#) page on [vode.com](#).